

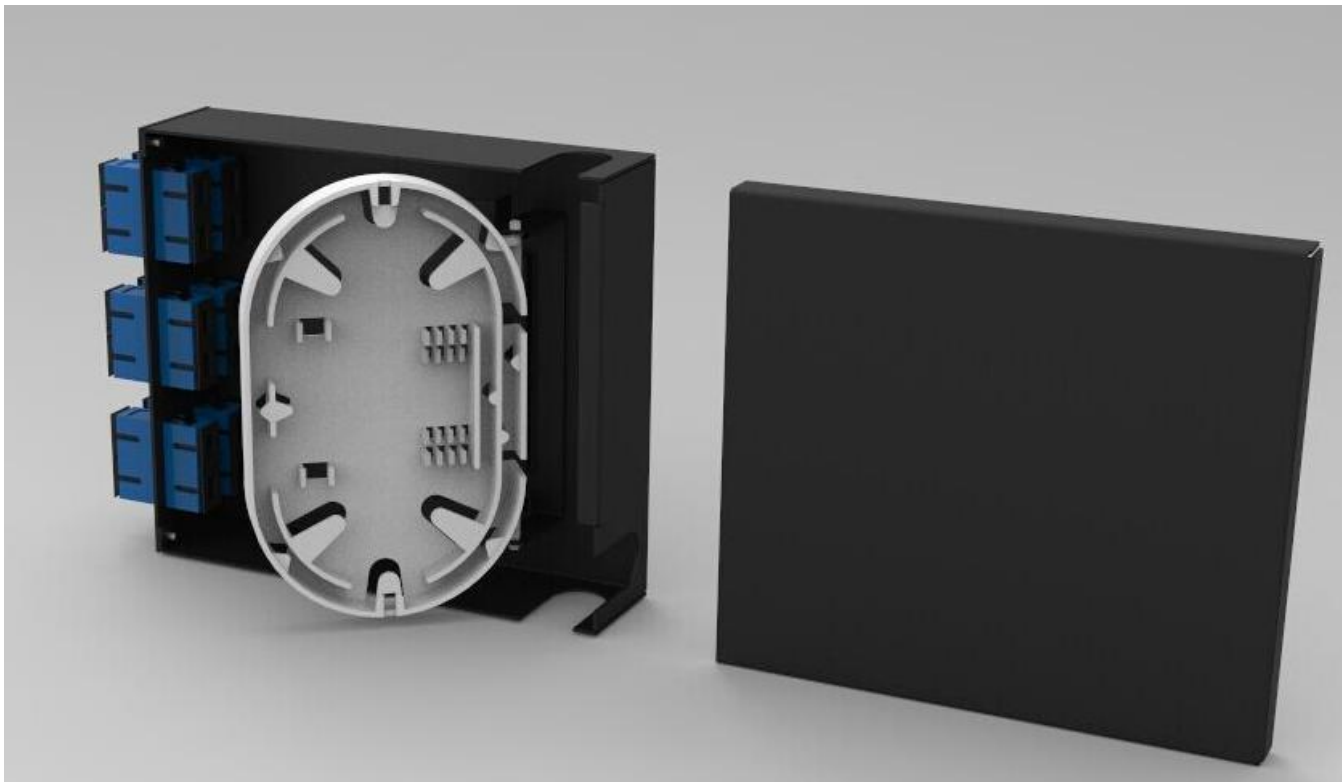
Product name :Mounting Rail Distribution box

Application

Mounting Rail Distribution box are newly designed for the placement of 6 SC duplex optical connectors and applicable to FTTH, FTTX Solutions, which are used in indoor floor fiber distribution, cost low expenses to enlarge fiber capacity. The distributor could be wall-mounted .It be application for cable termination, fiber distribution.

Features

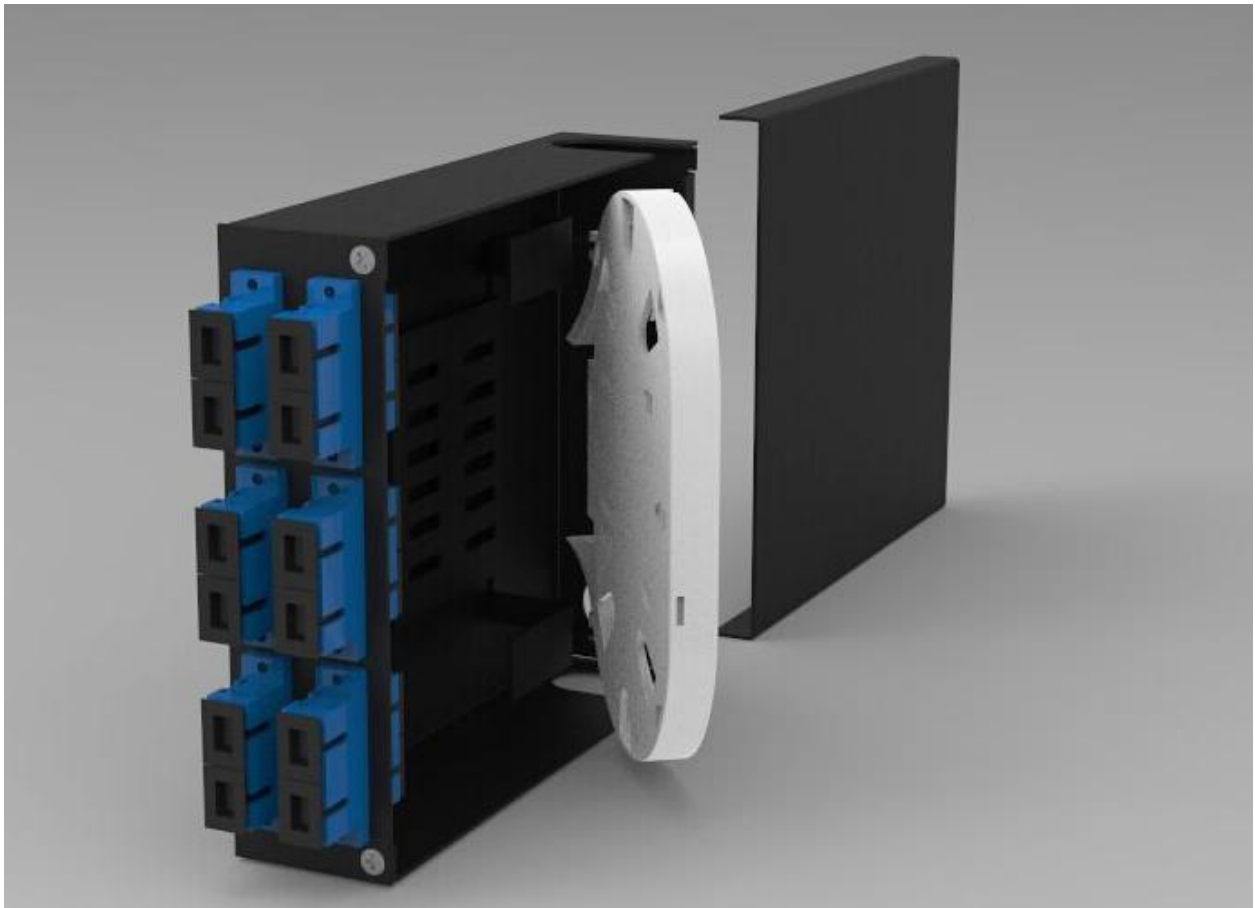
- Connector panel holder SC Duplex
- Placement of optical fiber reserve, length 1 m
- Management rings
- Wall-mounted
- Material: Cold Rolled Steel
- Splice tray capacity: 12 core per tray



Product description

For generic cabling in control cabinets, offers outlets and distributors which can be mounted directly next to one another on the mounting rail. They form the ideal connection between the arriving installation lines and the wiring inside the control cabinet. The components can be quickly and easily mounted on conventional TH 35 rails by simply clicking them in place.

Mounting Rail Distribution box are available for either loose-tube, mini-breakout or breakout cables of up to 12 fibers using splice techniques or for fiber optic adaptors using pre-assembled fiber optic links. Fiber optic adaptor types including SC Duplex can be installed in the interchangeable front panel. The installer can flexibly feed the cables from three directions while easily maintaining minimum bending radii using a storage reserve with additional cable retainers. Versions with pre-assembled adaptors are already available for mini-breakout and breakout cables. For loose-tube cables, the distributors are supplied with ready-to-splice, coloured pigtails and cable strain relief.



Technical Data Sheet

Technical Data

| | |
|---------------------------|---------------------------|
| Self-extinguishing degree | V0 to UL 94 |
| Color | Light grey or Black |
| Material | Cold Rolled Steel |
| Dimensions (L× W × H) | 142 × 127 × 37mm |
| Cable Entry | Cable gland M20 for 8-9mm |
| Weight | 1.5 kg |