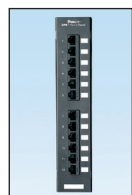
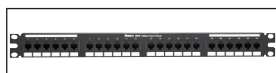


NetKey® Patch Panels

- Mount to standard ANSI/TIA 19" racks
- Punchdown patch panels meet all industry performance standards for Category 6A, 6 and 5e
- Modular patch panels accept all NetKey® Modules
- Molded patch panels made of strong polymer material, with port numbering front and back
- Optional angled versions available for high density installations
- Strain relief bars assist in cable management and bend radius control
- Filler panels reserve space for future use and direct airflow



NK6PPG12WY
NK5EPPG12WY



NK6XPPG24Y



NKA6XPPG24Y



NKFP48Y



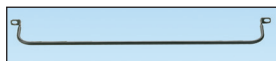
NKFP24Y



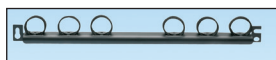
NKPPA48FMY



WB89D



SRB19BLY



SRBM19BLY

| Part Number | Description |
|-------------|-------------|
|-------------|-------------|

Punchdown Patch Panels*

Category 6A

| | |
|-------------|----------------------------------------------------------------|
| NK6XPPG24Y | Category 6A punchdown patch panel, 24 port, 1 RU. |
| NK6XPPG48Y | Category 6A punchdown patch panel, 48 port, 2 RU. |
| NKA6XPPG24Y | Category 6A angled punchdown patch panel, 24 port, 1 RU. |
| NKA6XPPG48Y | Category 6A angled punchdown patch panel, 48 port, 2 RU. |
| NK6XPP24P | Category 6A molded, flat, punchdown patch panel, 24 port, 1RU. |
| NK6XPP48P | Category 6A molded, flat, punchdown patch panel, 48 port, 2RU. |

Category 6

| | |
|------------|----------------------------------------------------------------------------------------------|
| NK6PPG12WY | Category 6, 12-port punchdown patch panel. Mounts to wall with standard 89D bracket (WB89D). |
| NKA6PPG24Y | Category 6, 24-port, angled punchdown patch panel, 1 RU. |
| NKA6PPG48Y | Category 6, 48-port, angled punchdown patch panel, 2 RU. |
| NK6PPG24Y | Category 6, 24-port, punchdown patch panel, 1 RU. |
| NK6PPG48Y | Category 6, 48-port, punchdown patch panel, 2 RU. |
| NK6PP24P | Category 6, 24-port, molded punchdown patch panel, 1 RU. |
| NK6PP48P | Category 6, 48-port, molded punchdown patch panel, 2 RU. |

Category 5e

| | |
|-------------|-----------------------------------------------------------------------------------------------|
| NK5EPPG12WY | Category 5e, 12-port punchdown patch panel. Mounts to wall with standard 89D bracket (WB89D). |
| NKA5EPPG24Y | Category 5e, 24-port, angled punchdown patch panel, 1 RU. |
| NKA5EPPG48Y | Category 5e, 48-port, angled punchdown patch panel, 2 RU. |
| NK5EPPG24Y | Category 5e, 24-port, punchdown patch panel, 1 RU. |
| NK5EPPG48Y | Category 5e, 48-port, punchdown patch panel, 2 RU. |
| NK5EPP24P | Category 5e, 24-port, molded punchdown patch panel, 1 RU. |
| NK5EPP48P | Category 5e, 48-port, molded punchdown patch panel, 2 RU. |

*Punchdown patch panels are color-coded for T568A and T568B wiring schemes. Punchdown tools found on page 13.

Modular Patch Panels

| | |
|------------|---------------------------------------------------------------------------------------------------------------|
| NKFP12W | 12-port modular patch panel with front removable faceplate. Mounts to wall with standard 89D bracket (WB89D). |
| NKFP24Y | 24-port modular patch panel with front removable faceplate, 1 RU. |
| NKFP48Y | 48-port modular patch panel with front removable faceplate, 2 RU. |
| NKPPA24FMY | 24-port flush mount angled modular patch panel, 1 RU. |
| NKPPA48FMY | 48-port flush mount angled modular patch panel, 2 RU. |
| NKPP24FMY | 24-port flush mount modular patch panel, 1 RU. |
| NKPP48FMY | 48-port flush mount modular patch panel, 2 RU. |

Wall Mount Bracket

| | |
|-------|-----------------------------------------------------------------------------------|
| WB89D | Wall mount bracket. Ideal for use with 12-port punchdown or modular patch panels. |
|-------|-----------------------------------------------------------------------------------|

Strain Relief Bars

| | |
|-------------|------------------------------------------------------------------------------------|
| SRB19BLY | Strain relief bar extends 2" from standard 19" rack for additional cable support. |
| SRBM19BLY | Strain relief bar and Tak-Ty® Hook & Loop Cable Ties for additional cable support. |
| SRBS19BL-XY | Straight strain relief bar. |