

NOTES:

1. INSTALLATION SHALL COMPLY WITH ALL APPLICABLE NATIONAL, STATE AND LOCAL ELECTRICAL REGULATIONS.
2. REFER TO PRODUCT DOCUMENTATION FOR ADDITIONAL DETAILS PRIOR TO INSTALLATION AND SITE PREPARATION WORK.
3. ALL DIMENSIONS ARE IN MILLIMETERS [INCHES].
- △ 4. FRONT AND REAR ACCESS REQUIRED FOR SERVICE. MINIMUM REQUIRED FRONT/REAR CLEARANCE IS 36.0 [914].
5. NET WEIGHT OF THE EMPTY UNIT IS 105.2 kg [231.93 lb].
6. LOADING CAPACITY:
 - a) STATIC LOAD: 1200kg [2645.5 lb].
 - b) DYNAMIC LOAD: 600kg [1322.7 lb]
7. TOP AND BOTTOM CABLE ENTRY USING APPROPRIATE CUSTOMER PROVIDED SOLUTION.
8. COLOR: BLACK.

THIS DRAWING AND SPECIFICATIONS HEREIN ARE THE PROPERTY OF SCHNEIDER ELECTRIC AND SHALL NOT BE COPIED, REPRODUCED OR USED IN WHOLE OR IN PART, AS THE BASIS FOR THE MANUFACTURE OR SALE OF ITEMS WITHOUT WRITTEN PERMISSION FROM SCHNEIDER ELECTRIC. THIS DRAWING IS BASED UPON LATEST AVAILABLE INFORMATION AND IS SUBJECT TO CHANGE WITHOUT NOTICE.

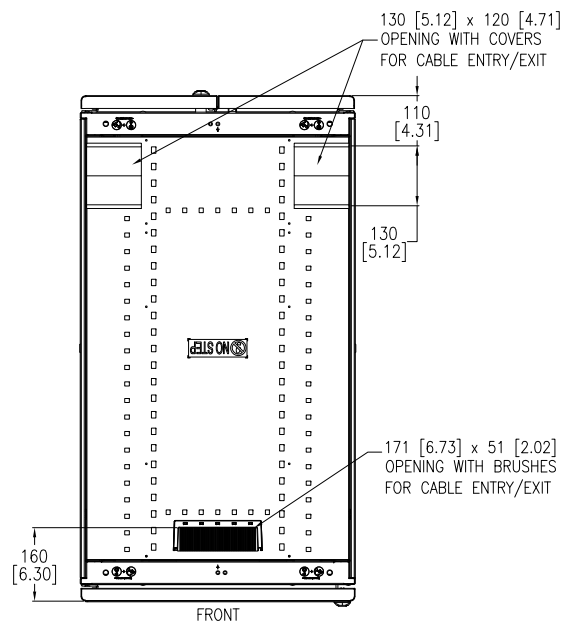
Schneider
Electric

TITLE: Easy RACK 42U
600mm Wide x 1100mm Deep
GENERAL ARRANGEMENT

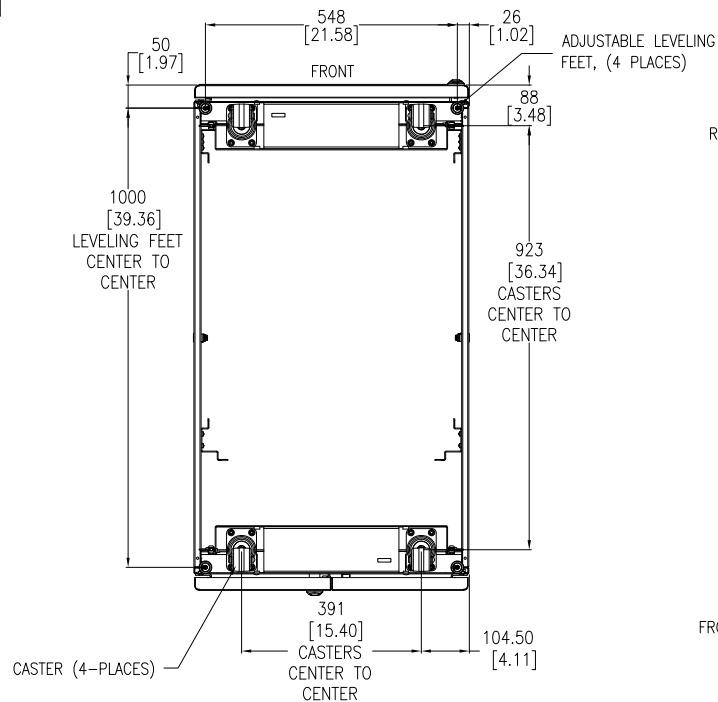
PROJECT: SUBMITTAL DRAWINGS SHEET 1 OF 3

DWG NO: ER6212 REV. 0

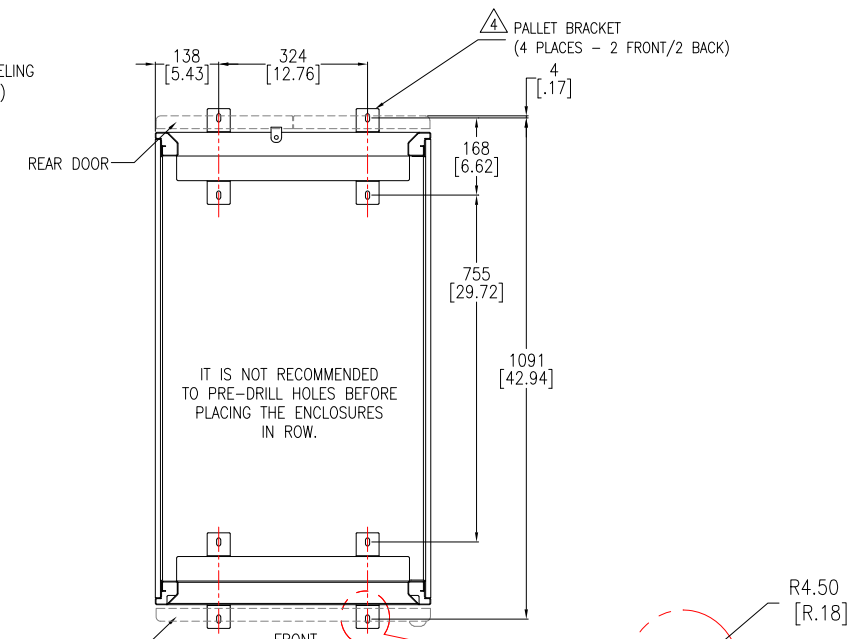
DRAWN BY: JAYAPRAKASH	08-DEC-20	FIRST ANGLE PROJECTION
ENGINEER: Job GU	08-DEC-20	
APPROVED BY: Job GU	08-DEC-20	



TOP VIEW

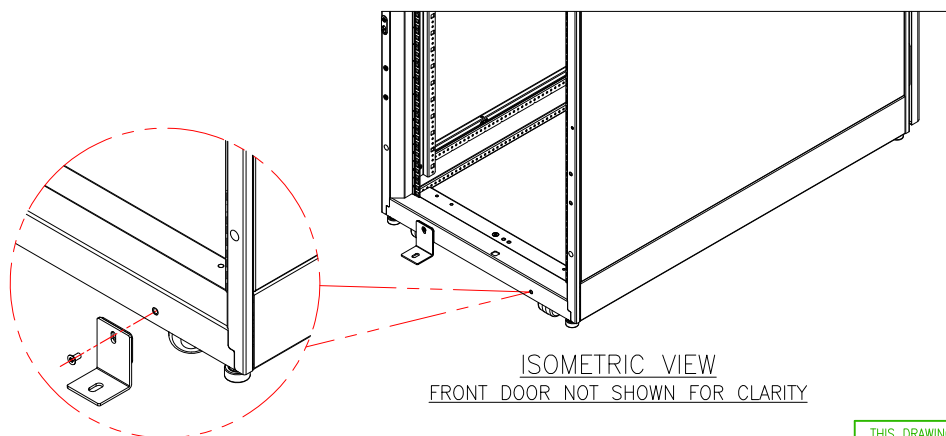


BOTTOM VIEW
(TOP COVER NOT SHOWN FOR CLARITY)



ANCHORING DETAILS
VIEW LOOKING FROM TOP
WITH PALLET BRACKETS FOR ANCHORING
(TOP COVER & SOME OTHER COMPONENTS ARE
NOT SHOWN FOR CLARITY)

STABILIZING THE ENCLOSURE:
TO PREVENT THE ENCLOSURE FROM MOVING FROM ITS FINAL LOCATION
(IF NOT JOINED WITH ANOTHER COMPONENT, USE PALLET/ANCHORING BRACKET)
ATTACH THE PALLET/ANCHORING BRACKETS TO THE ENCLOSURE AS SHOWN.
USE CODE COMPLIANT FASTENERS TO SECURE THE ENCLOSURE TO THE FLOOR.



(4 PLACES - 2-FRONT/2-BACK)
ENLARGED VIEW

NOTES:

1. INSTALLATION SHALL COMPLY WITH ALL APPLICABLE NATIONAL, STATE AND LOCAL ELECTRICAL REGULATIONS.
2. REFER TO PRODUCT DOCUMENTATION FOR ADDITIONAL DETAILS PRIOR TO INSTALLATION AND SITE PREPARATION WORK.
3. ALL DIMENSIONS ARE IN MILLIMETERS [INCHES].
- △ 4. PALLET/ANCHORING BRACKETS ARE PROVIDED WITH THE ENCLOSURE AND ARE SECURED TO THE ENCLOSURE AND PALLET FOR SHIPMENT. RETAIN THE PALLET BRACKETS FROM SHIPMENT. THESE BRACKETS ARE USED TO ANCHOR THE ENCLOSURE ONCE INSTALLED. PALLET/ANCHORING BRACKETS CAN BE INSTALLED EITHER INSIDE OR OUTSIDE THE NetShelter WITH TWO AT FRONT AND TWO IN BACK.

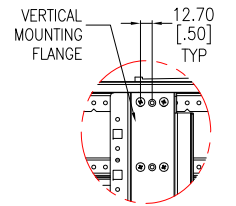
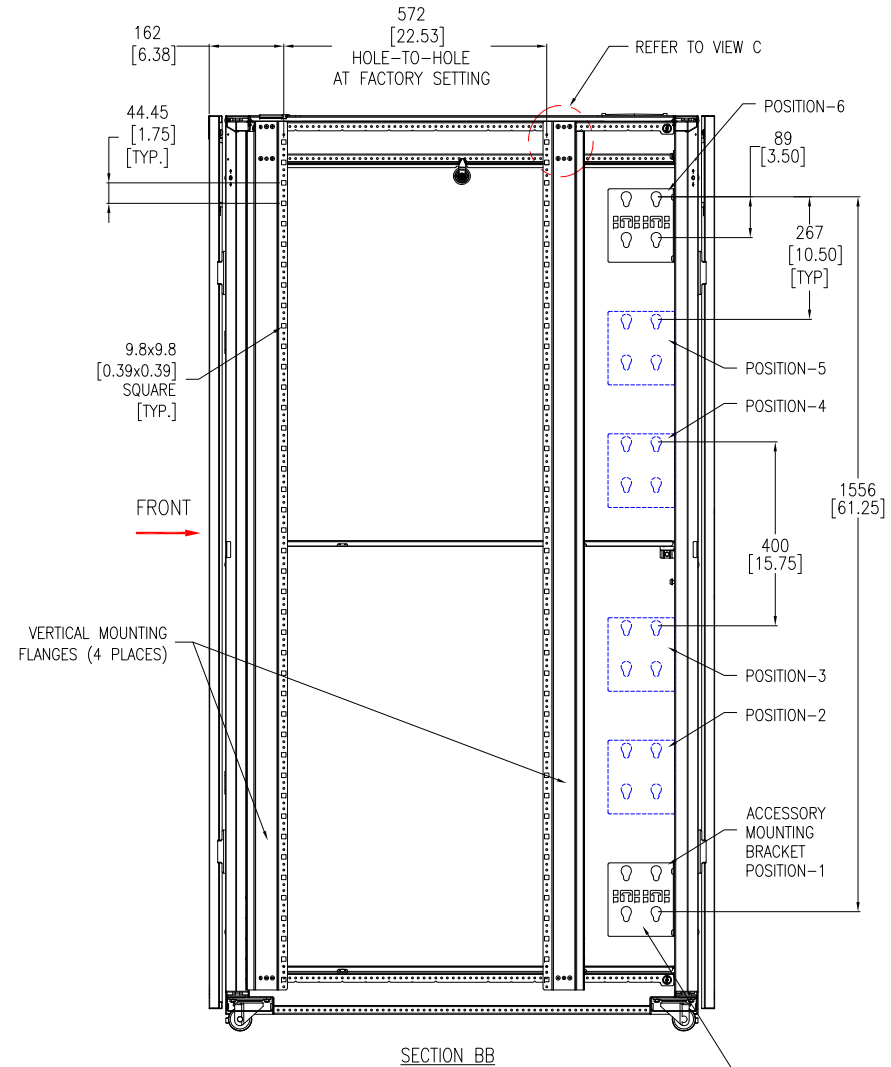
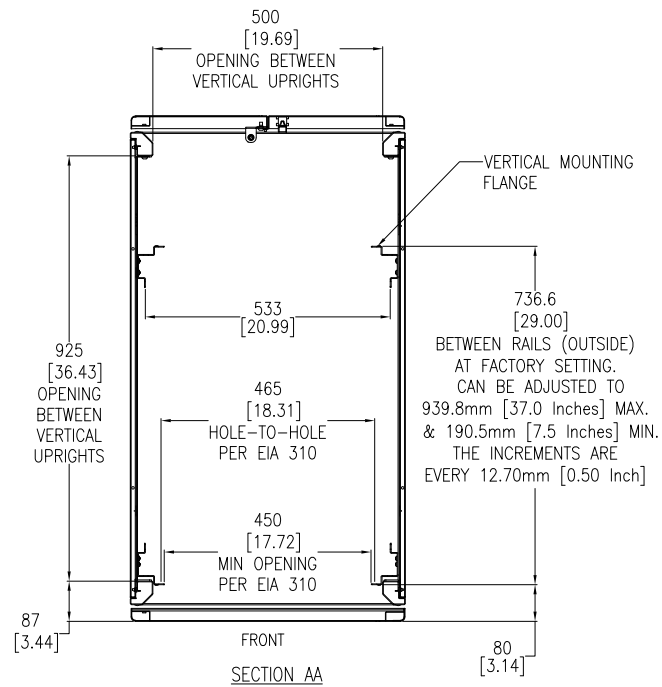
THIS DRAWING AND SPECIFICATIONS HEREIN ARE THE PROPERTY OF SCHNEIDER ELECTRIC AND SHALL NOT BE COPIED, REPRODUCED OR USED IN WHOLE OR IN PART, AS THE BASIS FOR THE MANUFACTURE OR SALE OF ITEMS WITHOUT WRITTEN PERMISSION FROM SCHNEIDER ELECTRIC. THIS DRAWING IS BASED UPON LATEST AVAILABLE INFORMATION AND IS SUBJECT TO CHANGE WITHOUT NOTICE.

Schneider
Electric

TITLE: Easy RACK 42U
600mm Wide x 1100mm Deep
TOP/BOTTOM & ANCHORING DETAILS

DWG NO:	ER6212	REV:	0
DRAWN BY:	JAYAPRAKASH	08-DEC-20	FIRST
ENGINEER:	Job GU	08-DEC-20	ANGLE
APPROVED BY:	Job GU	08-DEC-20	PROJECTION

PROJECT: SUBMITTAL DRAWINGS SHEET 2 OF 3



NOTE:
THERE ARE SIX POSITIONS ON EACH SIDE OF THE ENCLOSURE FOR INSTALLING ACCESSORY MOUNTING BRACKETS.
4 ACCESSORY MOUNTING BRACKETS ARE PROVIDED STANDARD WITH THE ENCLOSURE, 2 ON THE RIGHT SIDE AND 2 ON THE LEFT SIDE OF REAR OF THE UNIT LOCATED AT POSITIONS 6 & 1.
OTHER BRACKETS ARE AVAILABLE FOR PURCHASE AS SKU ER7PDUBRKT. FULL ENCLOSURE HEIGHT ACCESSORIES. Eg. VERTICAL 0-U RACK PDUs UTILIZE STANDARD ACCESSORY MOUNTING BRACKET POSITIONS 6 & 1 AND HALF HEIGHT ACCESSORIES. E.g. VERTICAL CABLE ORGANIZERS UTILIZE MOUNTING BRACKET POSITIONS 6 & 4 OR 3 & 1.

- NOTES:**
1. INSTALLATION SHALL COMPLY WITH ALL APPLICABLE NATIONAL, STATE AND LOCAL ELECTRICAL REGULATIONS.
 2. REFER TO PRODUCT DOCUMENTATION FOR ADDITIONAL DETAILS PRIOR TO INSTALLATION AND SITE PREPARATION WORK.
 3. ALL DIMENSIONS ARE IN MILLIMETERS [INCHES].

THIS DRAWING AND SPECIFICATIONS HEREIN ARE THE PROPERTY OF SCHNEIDER ELECTRIC AND SHALL NOT BE COPIED, REPRODUCED OR USED IN WHOLE OR IN PART, AS THE BASIS FOR THE MANUFACTURE OR SALE OF ITEMS WITHOUT WRITTEN PERMISSION FROM SCHNEIDER ELECTRIC. THIS DRAWING IS BASED UPON LATEST AVAILABLE INFORMATION AND IS SUBJECT TO CHANGE WITHOUT NOTICE.

Schneider Electric

TITLE:
Easy RACK 42U
600mm Wide x 1100mm Deep
SECTION VIEWS

PROJECT: SUBMITTAL DRAWINGS SHEET 3 OF 3

DWG NO: ER6212 **REV.** 0

DRAWN BY: JAYAPRAKASH	08-DEC-20	FIRST ANGLE PROJECTION
ENGINEER: Job GU	08-DEC-20	
APPROVED BY: Job GU	08-DEC-20	